



COLOUR
PLACEMENT
SYSTEM®



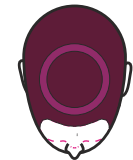
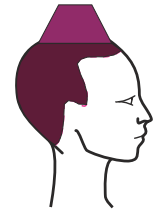
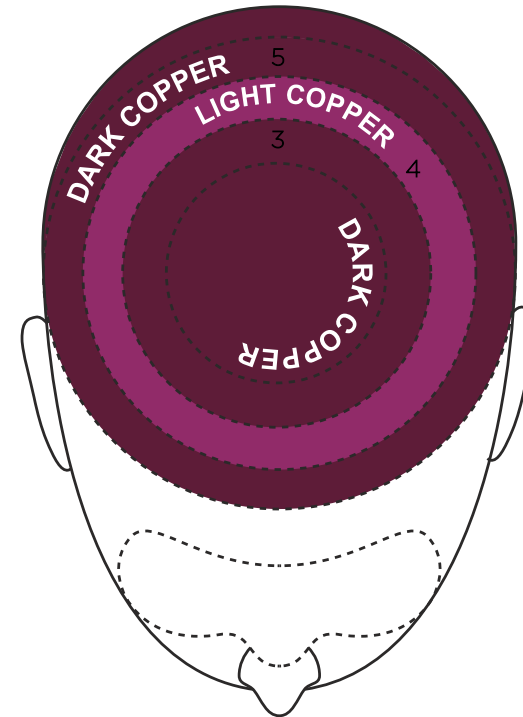
WWW.COLOURPLACEMENT.COM

Info@colourplacement.com

360°

TECHNIQUE

CLIENT RECORD COLOUR PLACEMENT



THE TWISTER



THE MAIN SHADERS



ADD-ON SHADERS



COLOUR GUARD

NOTE

- 1 SEPARATE THE FIRST SECTION USING THE TWISTER N.3 AND POSITION THE COLOUR GUARD N.3
- 2 APPLY THE DARK COPPER AND PLACE THE MAIN SHADER N.3
- 3 SEPARATE 2 CENTIMETER SECTION AS SHOW ON THE RECORD CARD AND PLACE THE COLOUR GUARD N.4
- 4 PLACE THE LIGHT COPPER FROM THE ROOT TO THE END.
- 5 PLACE THE N4 ADD-ON SHADER
- 6 APPLY THE DARK COPPER ON THE REST OF THE REMAINING HAIR